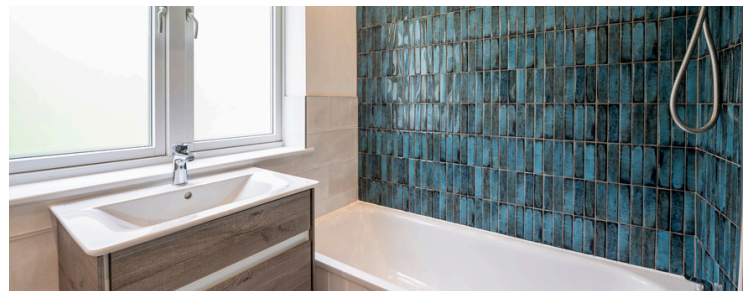




Escallonia

Sally Port, St Mary's,

TR21 0JE



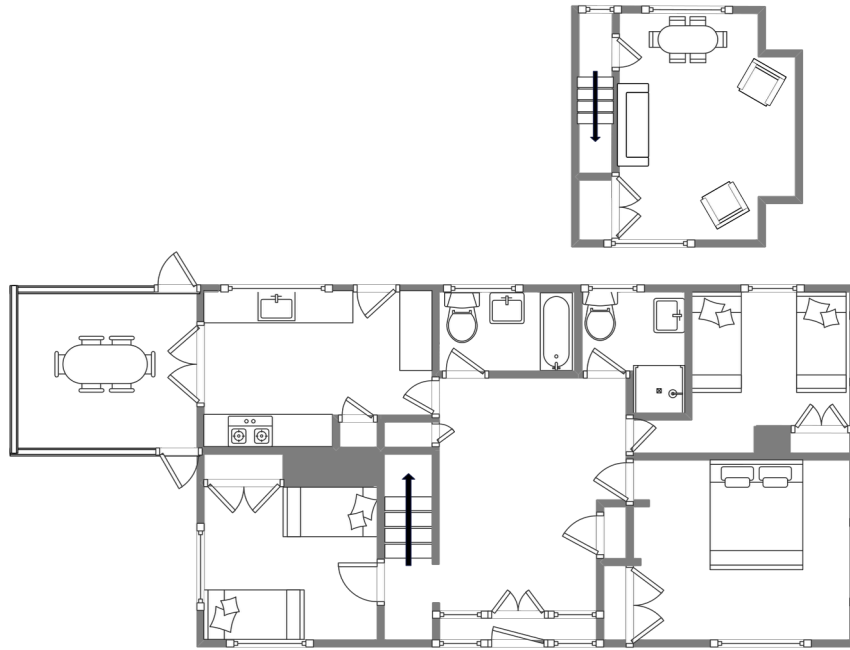
Sleeps 6 | Thursday Change over

- Double and Twin Arrangement
- Internet Access
- Children Welcome
- Laundry Facility
- Convenient location for beaches and Quay
- Sea View

Escallonia is a magnificent family home that commands stunning views over Hugh Town towards Porthcressa Bay, and provides the perfect holiday base for families or groups of friends who seek a little luxury.

One king size and two twin bedrooms comfortably sleep six guests, and a dormer sitting room makes the most of the dwelling's elevated position. The large kitchen opens into a dining conservatory which offers direct access to the front and rear gardens. A separate bathroom and shower room complete the internal picture. Escallonia is situated a short distance from the heart of town and is an outstanding choice for the energetic or young at heart. The historic Garrison is also nearby for one of the most picturesque and popular walks on St Mary's.

Layout



Getting to the property

Map of St Marys



Directions from the Quay | Walking time: 8-10 minutes

Head towards the entrance to the quay
Turn left at The Mermaid Inn on to Hugh Street
Turn right at the Chemist in the square
Take the left fork to Jerusalem terrace

At the Police station turn right into Sally Port
Turn right at the T-entrance to Sally Port
Escallonia is at the end of the road
Take the steps from the garage up to the house

What3words///starring.pest.hires

Scilly Self Catering
Lower Strand
Isles of Scilly, TR21 0PS

Enquiries@scillyselfcatering.com
01720 422082
www.scillyselfcatering.com